

Threaded Shaft Collars

Steel / Stainless Steel

SPECIFICATION

Version in Steel

Steel **ST**

Sintered

Black oxidized with vapor

Socket cap screw DIN 912

Steel, plain

Version in Stainless Steel

Stainless steel AISI 316LHC **NI**

Socket cap screw DIN 912

Stainless steel AISI 304



INFORMATION

Threaded shaft collars GN 706.3 correspond in outer dimensions to the semi-split shaft collars GN 706.2. The bore has, however, an internal thread so that the clamping ring can be screwed in like a nut, for instance, to a spindle thread in order to limit the adjustment range or the screw-in depth. The clamping is then done by reducing the slot height without damaging the thread.

The thread d_3 for sizes $d_1 = 20$ to 32 is designed as a through hole, from size $d_1 = 42$ and larger, it is designed as blind hole.

- List of Shaft Collar Types (see page)

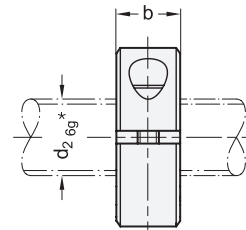
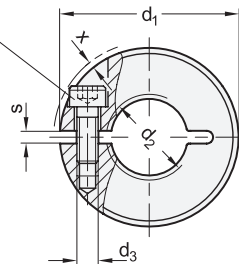
TECHNICAL INFORMATION

- Metric ISO thread (see page 21)
- Stainless Steel Characteristics (see page A26)

ACCESSORY

- Adjustable Hand Levers GN 311 (see page)
- Damping Washer GN 7062.30 (see page)

Socket cap screw
DIN 912



* recommended diameter tolerance

* Complete with

ST	NI
Steel	Stainless Steel

GN 706.3

STAINLESS STEEL

Description	d_1	d_2 6H	$b \pm 0.2$	d_3	s	$x \approx$ Max. protrusion of cap screw	Adjustable hand lever for d_3	
GN 706.3-20-M8-*	20	M 8	9	M 3	2.1	1	-	15
GN 706.3-20-M8x1-*	20	M 8 x 1	9	M 3	2.1	1	-	16
GN 706.3-22-M10-*	22	M 10	9	M 3	2.1	0.8	-	14
GN 706.3-22-M10x1-*	22	M 10 x 1	9	M 3	2.1	0.8	-	18
GN 706.3-26-M12-*	26	M 12	11	M 4	2.1	1.6	-	31
GN 706.3-26-M12x1,5-*	26	M 12 x 1.5	11	M 4	2.1	1.6	-	31
GN 706.3-32-M16-*	32	M 16	11	M 4	2.1	0.7	GN 311-30-M4-12-SW	42
GN 706.3-32-M16x1,5-*	32	M 16 x 1.5	11	M 4	2.1	0.7	GN 311-30-M4-12-SW	43
GN 706.3-42-M20-*	42	M 20	15	M 5	3	0.6	GN 311-30-M5-15-SW	106
GN 706.3-42-M20x1,5-*	42	M 20 x 1.5	15	M 5	3	0.6	GN 311-30-M5-15-SW	105
GN 706.3-48-M24x1,5-*	48	M 24 x 1.5	15	M 5	3	0	GN 311-45-M5-16-SW	134
GN 706.3-55-M30x1,5-*	55	M 30 x 1.5	15	M 6	3	0.4	GN 311-45-M6-18-SW	164

Weight ST